



 **NALINI**

SPRING SUMMER
_LADY_2024_

PINK LINE

Femininity & Performance

Our PINK LINE offers all technical levels and concepts of use that we have in the man's collection, of course in beautiful female cuts and taste.





FAST LADY SUIT

03337401100C000.10

Ergonomic short sleeves road skinsuit, combines on the upper part very light and hydrophilic fabrics with a lower part in soft compressive and very compact lycra. The clean cut at leg's hem gives a very neat and elegant look combined with maximum comfort.

Maximum breathability on upper part, practical orizontal opening with a mesh portion coming up from the bib at the belly. Top of gamma female pad.

TECHNICAL FEATURES

- Muscle support and UV protection fabrics on lower part
- Full-length reverse YKK® cam-lock zipper
- Full-length zipper cover
- 3 rear pockets with reflective piping

TECNICITÀ

- Tessuti con supporto muscolare e protezione UV dalla vita in giù
- Zip YKK® rovescia lunga con tiretto cam-lock
- Patella sotto lampo su tutta la lunghezza
- 3 tasche posteriori con piping rifrangente

FIT	RACE
TREATMENTS	MANTODRY
SIZES	XS-2XL
PAD	RANDONNE' LADY

Aerodynamic	●●●●●
Lightness	●●●●●
Breathability	●●●●●
Elasticity	●●●●●



4000





NEW LADY LASER JERSEY

03350301100C000.10

This ergonomic jersey joins the best materials available and the most advanced technologies. It is the Nalini top of gamma for a road cyclist that looks for the aerodynamic and the highest breathability during the performance.

TECHNICAL FEATURES

- Kinetech woven fabric on sleeves, with iridescent and 3D structure
- Striped light mesh fabric on side panels to create ventilation
- Full-length reverse YKK® cam-lock zipper
- Silicone elastic gripper at hem
- Clean cut on sleeves' hem
- 3 functional rear pockets with reflective piping
- Reflective white transfers at chest and on the central rear pocket

TECNICITÀ

- Tessuto a navetta con struttura 3D iridescente su maniche
- Fianchetti in rete leggerissima a righe per garantire una migliore ventilazione
- Zip lunga rovescia YKK® cam-lock
- Elastico siliconato grippante a fondo maglia
- Fondo manica con taglio laser al vivo
- 3 funzionali tasche posteriori con piping rifrangente
- Transfer rifrangenti bianchi al petto e sulla tasca centrale posteriore

FIT RACE
TREATMENTS MANTODRY
SIZES XS-2XL

Aerodynamic ●●●●●
 Lightness ●●●●●
 Breathability ●●●●●
 Elasticity ●●●●●



4700



4020



FAST LADY BIB SHORT

03278701100C000.10

Female bib short which offers maximum comfort in all parts. The upper part uses soft elastics in microfiber without any stitching and leaving the torso free from any fabric except the braces, the bib continues on the lower part and legs with a compressive and soft lycra. The clean cut at leg's hem gives a very neat and elegant look combined with maximum comfort. Top of gamma female pad.

TECHNICAL FEATURES

- Lower part in compact Lycra for optimal muscle support and elasticity retention, with UPF +50 protection factor
- Braces all in clean cut microfiber without stitching
- Reflective Nalini logos at the side
- Silicone patch at the hip
- Clean cut at legs hem

TECNICITÀ

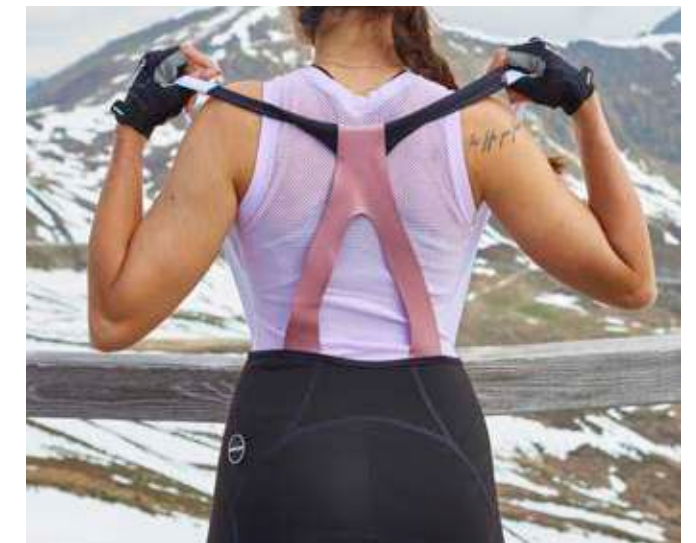
- Tessuto principale in lycra ad elevato sostegno muscolare e ottimo rientro elastico e fattore di protezione UPF +50
- Bretelle completamente in microfibra a taglio laser senza cuciture
- Loghi Nalini rifrangenti laterali
- Patch in silicone alla natica
- Taglio al vivo al fondo gamba

FIT	RACE
TREATMENTS	MANTODRY
SIZES	XS-2XL
PAD	RANDONNE' LADY

Aerodynamic	●●●●●
Lightness	●●●●●
Breathability	●●●●○
Elasticity	●●●●●



4000





COVER LADY JERSEY

03337601100C000.10

The weight of the fabric of this summer jersey is slightly higher compared to our more lightweight summer jerseys. This gives a nice protection from wind and is perfect in all situations when temperature is still a little fresh, when used also in warmer days we have granted air circulation with a lighter fabric on side panels and some laser holes in the underarm area. The pre dyed polyamide ensures a fantastic soft touch and the high elasticity wraps the body making this jersey particularly comfortable, it also guarantees a high UV protection from sunshine.

5 pockets, three in the classic rear position and two on the side panels, for a maximum carrying capacity.

TECHNICAL FEATURES

- Compact and hydrophilic main fabric pre dyed
- Side panels in super light fabric and underarm insert with ventilation holes
- Full-length reverse cam-lock YKK® zip
- Full-length zip cover and zip garage on top
- Silicone inner gripper at bottom hem
- 5 pockets: 3 traditional rear pockets + 2 side pockets, all in mesh for better breathability
- Holographic reflective details on front and sleeve

TECNICITÀ

- Tessuto compatto tinto, resistente e traspirante e ad asciugatura rapida
- Fianchi in tessuto super leggero con inserto sottomanica perforato
- Zip lunga cam-lock YKK®
- Patella sotto lampo lunga con zip garage sopra
- Elastico siliconato interno al fondo maglia
- 5 tasche: 3 posteriori e 2 sui fianchi, tutte in rete per una maggiore traspirabilità
- Dettagli rifrangenti cangianti sulla manica e sulla tasca centrale dietro

FIT RACE
TREATMENTS MANTODRY
SIZES XS-2XL

Lightness ●●○○○
 Breathability ●●●○○
 Elasticity ●●●●●
 Sun Protection ●●●●●



4750



5300



4450



GRAVEL LADY SHORT

03338501100C000.10

Female short made of special sport lycra fabric pre-dyed, with legs' hem in comfortable clean cut, available also in a beautiful dusty green. It provides optimal muscle support and UV protection and still has the softest touch. On both side panel a pocket in resistant mesh has been applied, to be used for telephone or bars.

TECHNICAL FEATURES

- Compressive Lycra Sport fabric providing optimal muscle support
- Clean cut at leg's hem
- Reflective transfers at the back and both sides
- Mesh side pockets on both legs

TECNICITÀ

- Supporto muscolare dato dalla capacità compressiva della Lycra Sport
- Fondo gamba con taglio al vivo
- Dettagli rifrangenti posteriori e laterali
- Tasca laterale in rete su entrambi i lati

FIT	REGULAR
TREATMENTS	None, properties are encased in the structure of the fabric
SIZES	XS-2XL
PAD	ALL TERRAIN LADY

Lightness	●●●●○
Breathability	●●●●○
Elasticity	●●●●●



4400



4000



FUNNY LADY JERSEY

03338601100C000.10

Stylish Jersey inspired to different moods, as cycling is and must be fun not only race and performance. The cyclist here wants to be ironic, wants to be noticed and thanks to these graphics she will be also safer as she will be seen.

It is made of quick-drying microfiber for superior lightness and breathability. Set-in sleeves with clean cut edges for major freedom of movement and comfort.

TECHNICAL FEATURES

- Mesh side panels to enhance breathability
- Clean cut sleeves' hem
- Reverse YKK® camlock zipper
- Low collar of two cm only
- Internal elastic with inside silicone at full bottom
- 3 functional rear pockets

TECNICITÀ

- Bande laterali in rete per ottimizzare la traspirabilità
- Fondo manica con finitura taglio al vivo
- Elastico interno a fondo maglia con silicone grippante
- Zip YKK® rovescia con tiretto cam-lock
- 3 funzionali tasche posteriori

FIT REGULAR
TREATMENTS MANTODRY
SIZES XS-3XL

Lightness ●●●●●
 Breathability ●●●●○
 Elasticity ●●●●●



4051



4100



4010



HOLLYWOOD LADY JERSEY

03350201100C000.10

Ergonomic jersey with set-in mesh sleeves, the sleeves made of this technical mesh have an aesthetically interesting look but are also very functional as they ensure ventilation and adaptability to body shape thanks to the high elasticity. Body fabric is super light and hydrophilic, with a flat smooth look that creates a nice contrast with the open mesh of the sleeves.

TECHNICAL FEATURES

- Sleeves in mesh with elastic at hem
- Hidden full length YKK® cam-lock zipper
- Internal elastic with inside silicone at full bottom
- 3 functional rear pockets with reflective piping

TECNICITÀ

- Maniche in rete con elastico al fondo
- Zip intera nascosta YKK® con tiretto cam-lock
- 3 funzionali tasche posteriori con piping rifrangente
- Elastico siliconato interno al fondo maglia

FIT | RACE
TREATMENTS | MANTODRY
SIZES | XS-3XL

Lightness ●●●●●
 Breathability ●●●●○
 Elasticity ●●●●●



4100



4020



4250



SOLID LADY JERSEY

03351401100C000.10

Comfort fit jersey with set-in sleeves and full zipper, made of lightweight and fast drying polyester. A mix of sober color blocking and high visibility colors. Three rear pockets and inside gripping elastic at hem.

TECHNICAL FEATURES

- Quick-drying lightweight polyester
- Silicone inner gripper at bottom hem
- Reverse YKK® camlock zipper
- 3 rear functional pockets

TECNICITÀ

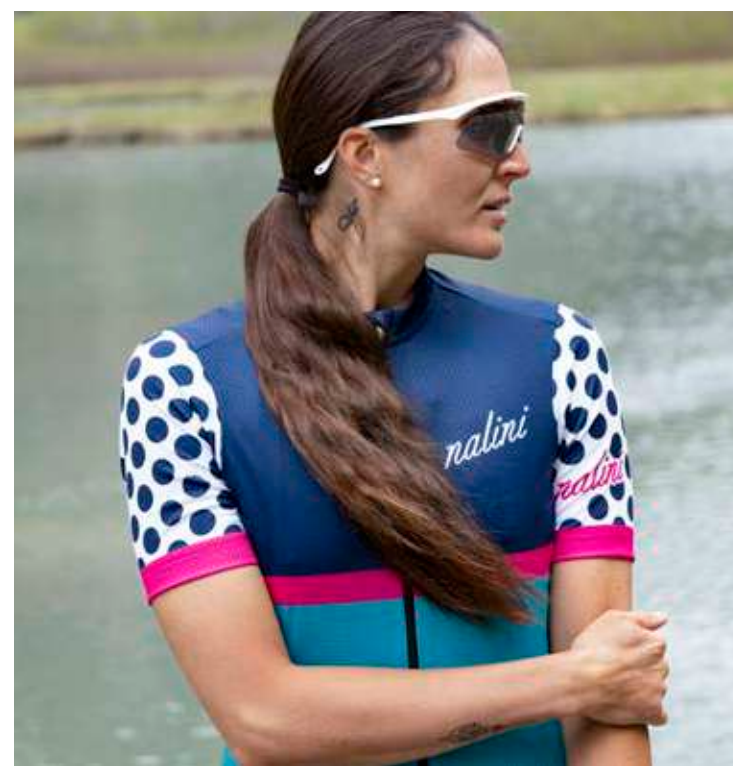
- Poliestere leggero a rapida asciugatura
- Fondo maglia con elastico interno grippante
- Zip YKK® rovescia con tiretto cam-lock
- 3 funzionali tasche posteriori

FIT COMFORT
TREATMENTS MANTODRY
SIZES XS-3XL

Lightness ●●●●○
 Breathability ●●●●○
 Elasticity ●●●○○



4020



4400



4100



NEW TANK TOP LADY

03339101100C000.10

Sleeveless tank with deep shoulders opening, made of lightweight structured fabric for enhanced temperature regulation.

TECHNICAL FEATURES

- Quick-drying fabric with microholes for enhanced ventilation
- Reflective Nalini logo at the back
- 3 functional rear pockets with reflective piping
- Silicone elastic gripper at bottom hem

TECNICITÀ

- Tessuto a rapida asciugatura con microfori che favoriscono la ventilazione
- Logo Nalini rifrangente posteriore
- 3 funzionali tasche posteriori con piping rifrangente
- Elastico siliconato al fondo

FIT REGULAR
TREATMENTS MANTODRY
SIZES XS-3XL

Lightness ●●●●●
 Breathability ●●●●●
 Elasticity ●●○○○



4055



4000



LADY SPORTY BIB

03116601100C001.10

This is an ergonomic bibshort with a special construction on front, at the braces. On the front a unique brace ensures the necessary support of the lower part without annoying the cyclist on the breast as it crosses the torso perfectly in the center.

The sport lycra used provides muscle support and UV protection. Silicone elastic gripper at legs' hem.

TECHNICAL FEATURES

- A unique frontal brace ensures the support and the best comfort at breast
- Lycra main fabric for superior muscle support, recovery features and UPF + 50 protection
- 4-needle flatlock stitching
- Silicone elastic gripper at legs' hem
- Reflective logos

TECNICITÀ

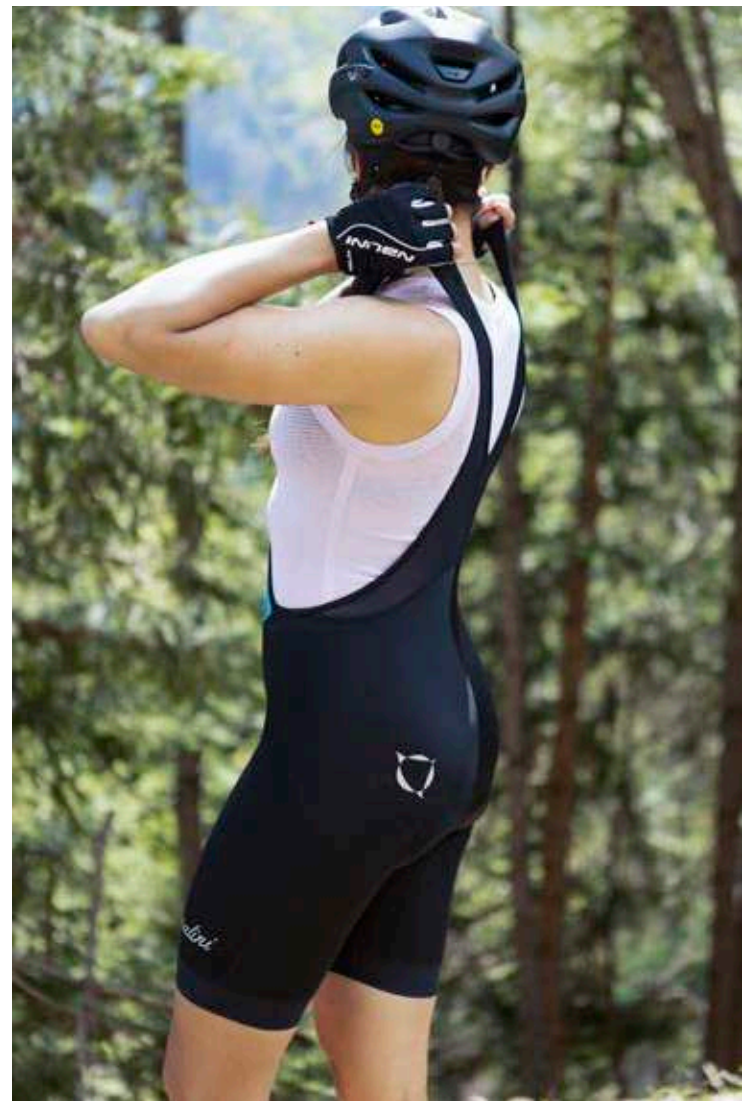
- Bretella centrale in morbida rete che garantisce supporto alla parte inferiore e comodità alla donna nella zona del seno.
- Tessuto principale in lycra ad elevato sostegno muscolare, ottimo rientro e protezione UPF +50
- Cuciture piatte a 4 aghi
- Fondo gamba in morbido elastico in microfibra con grip in silicone all'interno
- Loghi rifrangenti laterali e posteriori

FIT RACE
SIZES XS-3XL
PAD ALL TERRAIN LADY

Lightness ●●●●●
 Breathability ●●●●●
 Elasticity ●●●●●



4020





ROAD LADY SHORT

03337701100C000.10 - 03337701100C001.10*

Ergonomically designed shorts in a new high quality lycra available in fashion colors, it gives a soft but constant compression with freedom of movement.

The ergonomic waist construction ensures stability without using elastics at the belly.

Silicone elastic band at legs hem in height 65.

TECHNICAL FEATURES

- Compact Lycra for optimal muscle support and elasticity retention
- Low-rise, two-layer shaped waistband at the front
- Soft microfiber elastic band with silicone gripper at leg hem
- Reflective logos at the back and sides

TECNICITÀ

- Lycra ad elevato sostegno muscolare e ottimo rientro
- Cintura vita sagomata con parte anteriore ribassata in tessuto doppio
- Fondo gamba in morbido elastico in microfibra stampato con grip in silicone
- Loghi rifrangenti laterali e posteriori

FIT
SIZES
PAD

REGULAR
XS-3XL
ALL TERRAIN LADY

Lightness ●●●●○
Breathability ●●●●○
Elasticity ●●●●●



4100



4000*



4250



4400



4051



CORTINA 1956

02908801100C000.10

Comfortable anatomic shorts with shaped lowered waistband in lycra on frontal part at belly and in soft microfiber elastic on the rest of the waist ensuring the best comfort and support.

TECHNICAL FEATURES

- Main fabric: stretch polyamide
- Minimal construction for maximum comfort
- Low-rise shaped waistband at the front; soft gripper tape at the back
- Reflective logos at the back and sides
- 4-needle flatlock stitching
- Silicone elastic gripper at leg hem

TECNICITÀ

- Tessuto principale in morbida poliammide elasticizzata
- Tagli minimal per garantire un elevato comfort
- Cintura vita sagomata con parte anteriore ribassata ed elastico confortevole nella parte posteriore
- Loghi rifrangenti laterali e posteriori
- Cuciture piatte 4 aghi
- Fondo gamba con elastico interno siliconato

FIT | REGULAR
SIZES | XS-3XL
PAD | ALL AROUND LADY

Lightness ●●●●○
 Breathability ●●●●○
 Elasticity ●●●●●



4250



4000



LADY E-SHIRT

03350101100C000.10

E-Jersey with short front zipper entirely made with an abrasion resistant and quick-drying fabric, is adapt to e-bike and MTB cycling. With a zipped hidden pocket for essentials, no elastic at waist and comfort cut.

TECHNICAL FEATURES

- Short cam-lock zipper
- Abrasion resistant fabric
- 1 invisible zipped pocket at side

TECNICITÀ

- Zip corta con tiretto cam-lock
- Tessuto antiabrasivo
- 1 tasca invisibile laterale con zip

FIT | REGULAR MTB
TREATMENTS | MANTODRY
SIZES | XS-3XL

Lightness ●●●●○
 Breathability ●●●●●
 Elasticity ●●○○○



4000



4051



MTB LADY SHIRT

03354501100C000.10

MTB shirt with an MTB fitting and a female cut. It gives maximum freedom of movement. It is entirely made with an abrasion resistant and quick-drying fabric. With no elastic at waist comfort and adaptability to different body shapes is guaranteed. There is a zipped hidden pocket for essentials.

TECHNICAL FEATURES

- MTB short sleeves shirt
- 100% abrasion-resistant polyester
- Side pocket with invisible zip for essentials

TECNICITÀ

- Maglia T-shirt da MTB
- 100% poliestere resistente all'abrasione
- Tasca laterale con zip invisibile per oggetti personali

FIT REGULAR MTB
TREATMENTS MANTODRY
SIZES XS-3XL

Lightness ●●●●○
 Breathability ●●●●●
 Elasticity ●○○○○



4700



4055



4100



ADVENTURE LADY SHORT

03020201100C001.10

Female Shorts for multiple use, SingleTrack, or trekking and gravel. Made with durable and long-lasting stretch fabric of polyamide, with WR treatment. At waist regulation system with Velcro allows to adapt perfectly to position and kind of use.

Two zipped side pockets with cam lock puller and one pocket on the leg.

TECHNICAL FEATURES

- Elastic regulation system at waist with velcro closure
- Reinforced stitching points
- Reflex details on side
- Three zipped pockets with camlock puller

TECNICITÀ

- Regolazione elastica in velcro nella parte della cintura
- Ribattiture di rinforzo sulle cuciture
- Dettagli reflex sul fianco
- Tre tasche tutte con Zip camlock di chiusura

FIT	REGULAR MTB
TREATMENTS	W.R.
SIZES	XS-3XL
PAD	WOMAN MTB PAD

Lightness	●●●●○
Breathability	●●●●○
Elasticity	●●●●○



4550



4400



4000





Moa Sport Mantovani Vincenzo S.r.l. - Via Roppi, 48 - 46033 Castel d'Ario (MN) Italy - T. +39 0376 660777 - info@nalini.com - www.nalini.com

